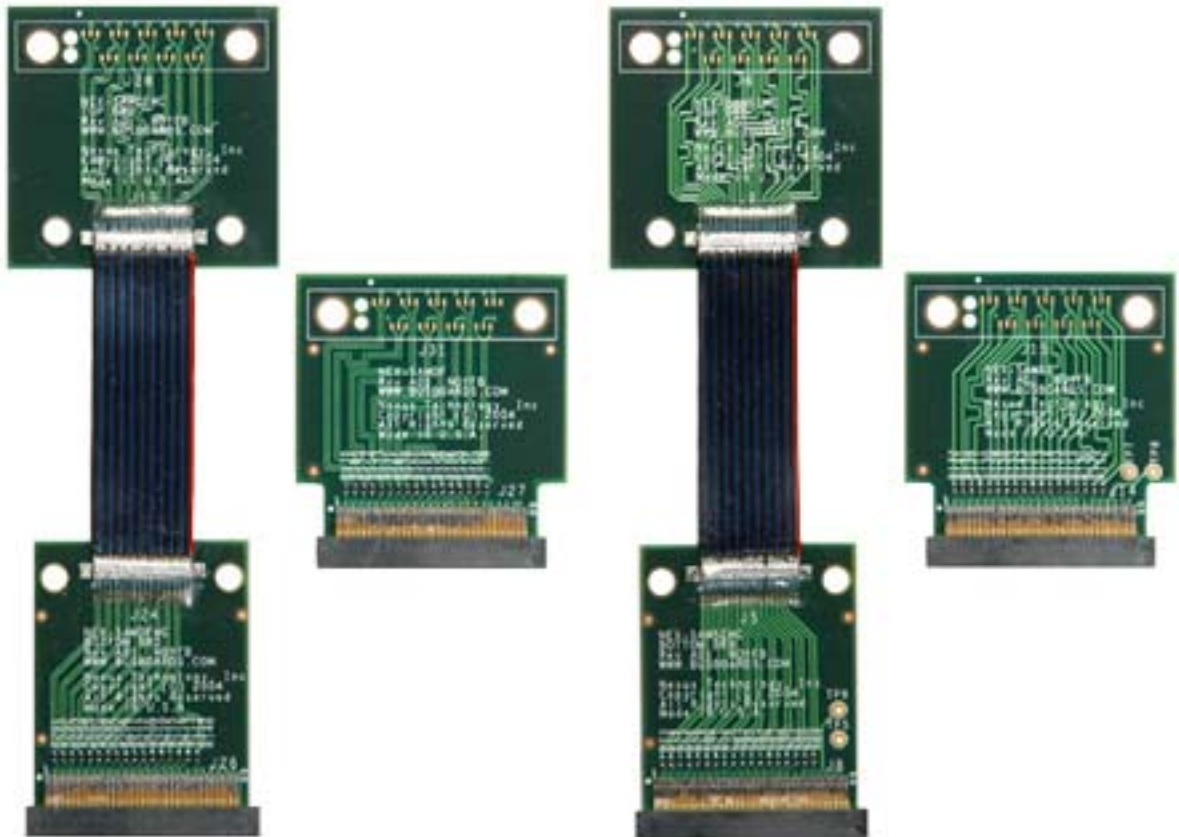

NEX-SAMXXX



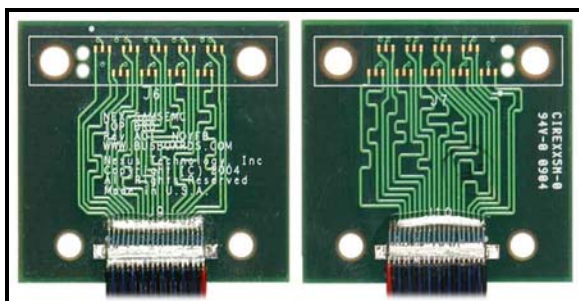
- Adapters for connecting Tektronix P68xx series probes to E5378A or E5379A probe footprints with or without the optional shrouds.
- Flexible and rigid adapters available
- Separate adapters for single-ended and differential probes
- Differential signals routed as pairs
- Impedance controlled, matched trace length designs
- Nexus Technology's back-to-back 2X-Probing feature for increased density.
- All 32 data lines routed
- Both differential clock/qualifier lines routed

General Description

There are two options available for NEX-SAM. Single-ended or differential adapters are available for connecting to either the E5378A or E5379A probe footprints. Also available is the option of a rigid or flexible adapter. All adapters come with the required hardware for modifying P68xx probes for back-to-back probing.

Product (NEX-)	Single-Ended (SE) or Differential (DF)	Rigid or Flexible	Replaces Probe	Requires Probes
SAMSE	SE	Rigid	E5378A	P6860
SAMSEMC	SE	Flexible	E5378A	P6860
SAMDF	DF	Rigid	E5379A	P6880
SAMDFMC	DF	Flexible	E5379A	P6880

All NEX-SAM adapters use Nexus Technology's 2X-Probing feature which converts P68xx probes to allow for back-to-back probing. This feature allows twice as many signals to be routed to the same area.

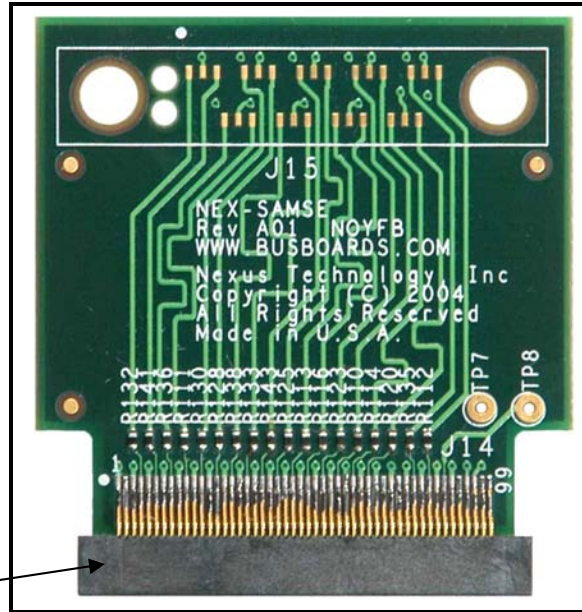


2X-Probing Feature allows for back-to-back probing. At left is the front side of board. At right is the back side of board.

Approximately 1.5" of horizontal keep-out is required on each side of the adapter for Tektronix probe attachment. Note that the flexible adapters (NEX-SAMSEMC or NEX-SAMDFMC) move this keep-out vertically by approximately 1.4" and allow for a sustainable 90° bend using tie-downs. See image below.

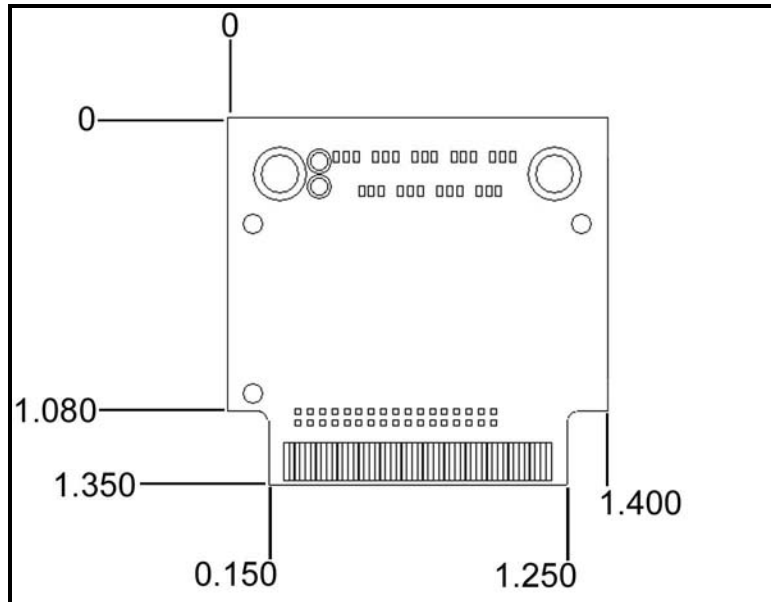
NEX-SAMSE

Single-ended rigid adapter for connecting two Tektronix P6860 probes to a single E5378A footprint.



Samtec P/N ASP-65267-02

NEX-SAMSE - Image



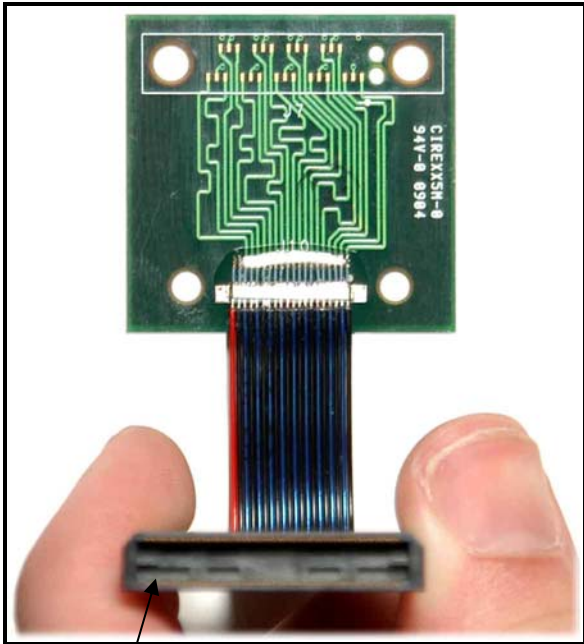
NEX-SAMSE - Mechanical

NEX-SAMSE – Pinout

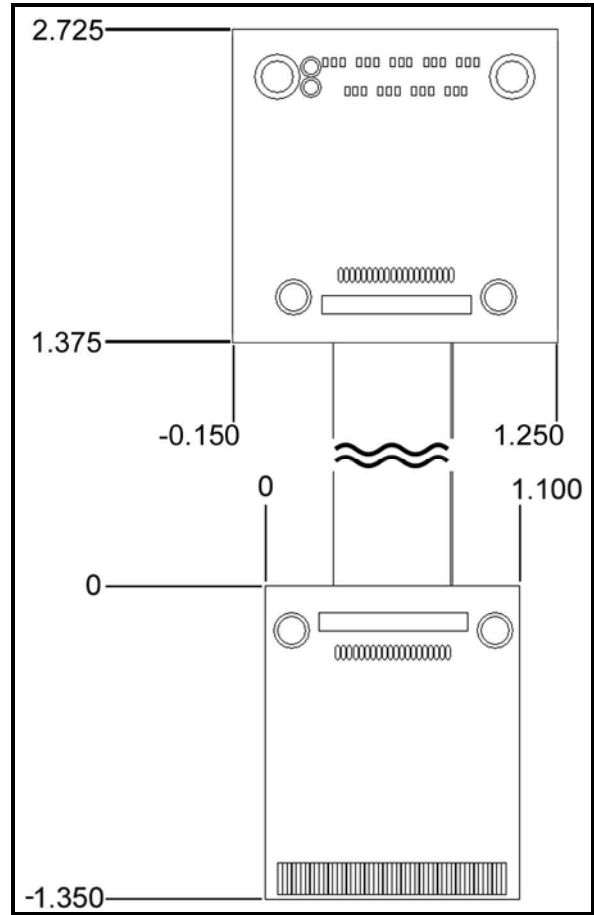
Samtec Pin	Tek. P6860	E5378A	Samtec Pin	P6860	E5378A
1		GND	2		GND
3		NC	4		NC
5		GND	6		GND
7	J15: DO	D0-O	8	J16: D0	D0-E
9		GND	10		GND
11	J15: D1	D1-O	12	J16: D1	D1-E
13		GND	14		GND
15	J15: D2	D2-O	16	J16: D2	D2-E
17		GND	18		GND
19	J15: D3	D3-O	20	J16: D3	D3-E
21		GND	22		GND
23	J15: D4	D4-O	24	J16: D4	D4-E
25		GND	26		GND
27	J15: D5	D5-O	28	J16: D5	D5-E
29		GND	30		GND
31	J15: D6	D6-O	32	J16: D6	D6-E
33		GND	34		GND
35	J15: D7	D7-O	36	J16: D7	D7-E
37		GND	38		GND
39	J15: D8	D8-O	40	J16: D8	D8-E
41		GND	42		GND
43	J15: D9	D9-O	44	J16: D9	D9-E
45		GND	46		GND
47	J15: D10	D10-O	48	J16: D10	D10-E
49		GND	50		GND
51	J15: D11	D11-O	52	J16: D11	D11-E
53		GND	54		GND
55	J15: D12	D12-O	56	J16: D12	D12-E
57		GND	58		GND
59	J15: D13	D13-O	60	J16: D13	D13-E
61		GND	62		GND
63	J15: D14	D14-O	64	J16: D14	D14-E
65		GND	66		GND
67	J15: D15	D15-O	68	J16: D15	D15-E
69		GND	70		GND
71		NC	72		NC
73		GND	74		GND
75		NC	76		NC
77		GND	78		GND
79	J15:CLK+	CKP0	80	J16:CLK+	CKPE
81		GND	82		GND
83	J15:CLK-	CKN0	84	J16:CLK-	CKNE
85		GND	86		GND
87	TP8 ¹	REF0	88	TP7 ¹	REFE
89		GND	90		GND
91		NC	92		NC
93		GND	94		GND
95		GND	96		GND
97		NC	98		GND
99		NC	100		NC

NEX-SAMSEMC

Single-ended flexible adapter for connecting two Tektronix P6860 probes to a single E5378A footprint.



NEX-SAMSEMC - Image



NEX-SAMSEMC - Mechanical

Samtec P/N ASP-65267-02

NEX-SAMSEMC – Pinout

Samtec Pin	P6860	E5378A	Samtec Pin	P6860	E5378A
1		GND	2		GND
3		NC	4		NC
5		GND	6		GND
7	J6: D0	D0-O	8	J7: D0	D0-E
9		GND	10		GND
11	J6: D1	D1-O	12	J7: D1	D1-E
13		GND	14		GND
15	J6: D2	D2-O	16	J7: D2	D2-E
17		GND	18		GND
19	J6: D3	D3-O	20	J7: D3	D3-E
21		GND	22		GND
23	J6: D4	D4-O	24	J7: D4	D4-E
25		GND	26		GND
27	J6: D5	D5-O	28	J7: D5	D5-E
29		GND	30		GND
31	J6: D6	D6-O	32	J7: D6	D6-E
33		GND	34		GND
35	J6: D7	D7-O	36	J7: D7	D7-E
37		GND	38		GND
39	J6: D8	D8-O	40	J7: D8	D8-E
41		GND	42		GND
43	J6: D9	D9-O	44	J7: D9	D9-E
45		GND	46		GND
47	J6: D10	D10-O	48	J7: D10	D10-E
49		GND	50		GND
51	J6: D11	D11-O	52	J7: D11	D11-E
53		GND	54		GND
55	J6: D12	D12-O	56	J7: D12	D12-E
57		GND	58		GND
59	J6: D13	D13-O	60	J7: D13	D13-E
61		GND	62		GND
63	J6: D14	D14-O	64	J7: D14	D14-E
65		GND	66		GND
67	J6: D15	D15-O	68	J7: D15	D15-E
69		GND	70		GND
71		NC	72		NC
73		GND	74		GND
75		NC	76		NC
77		GND	78		GND
79	J6: CLK+	CKP0	80	J7: CLK+	CKPE
81		GND	82		GND
83	J6: CLK-	CKN0	84	J7: CLK-	CKNE
85		GND	86		GND
87	TP6 ¹	REF0	88	TP5 ¹	REFE
89		GND	90		GND
91		NC	92		NC
93		GND	94		GND
95		GND	96		GND
97		NC	98		GND
99		NC	100		NC

¹ Test Points

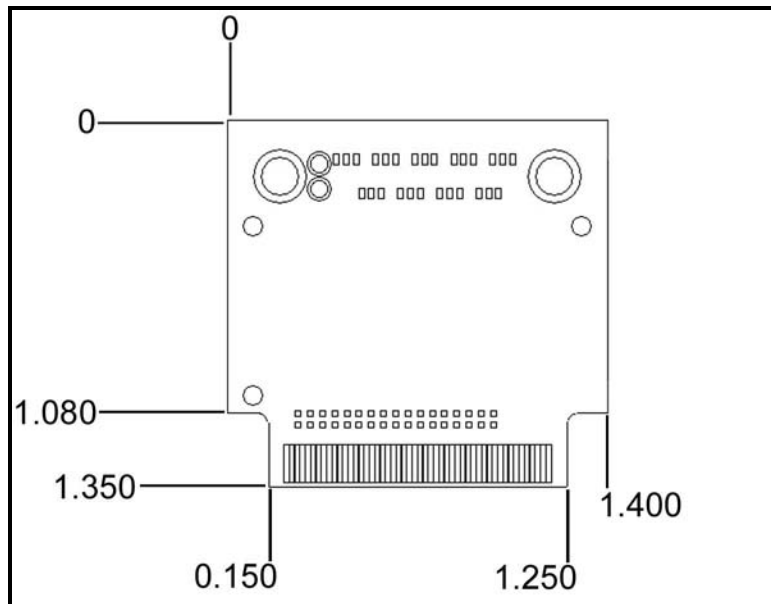
NEX-SAMDF

Differential rigid adapter for connecting 2 Tektronix P6880 probes to a single E5379A footprint.



Samtec P/N ASP-65267-02

NEX-SAMDF - Image



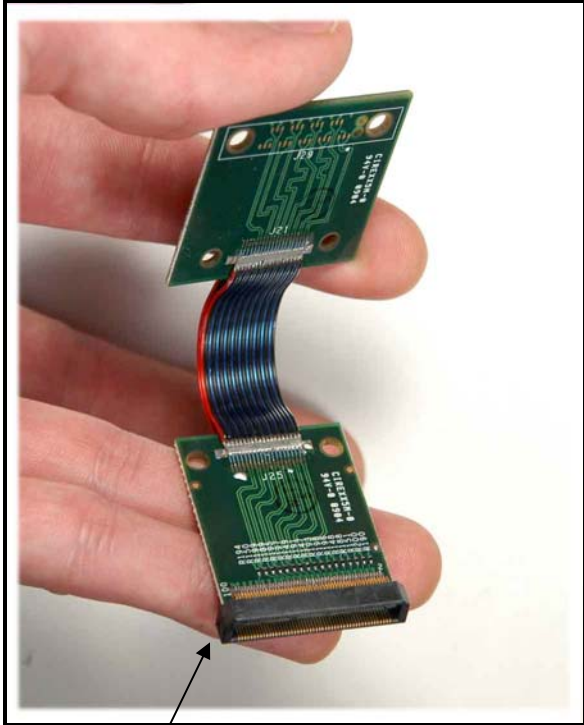
NEX-SAMDF - Mechanical

NEX-SAMDF – Pinout

Samtec Pin	P6860	E5378A	Samtec Pin	P6860	E5378A
1		GND	2		GND
3		NC	4		NC
5		GND	6		GND
7	J31: DO-	D0N	8	J31: D0+	D0P
9		GND	10		GND
11	J31: D1-	D1N	12	J31: D1+	D1P
13		GND	14		GND
15	J31: D2-	D2N	16	J31: D2+	D2P
17		GND	18		GND
19	J31: D3-	D3N	20	J31: D3+	D3P
21		GND	22		GND
23	J31: D4-	D4N	24	J31: D4+	D4P
25		GND	26		GND
27	J31: D5-	D5N	28	J31: D5+	D5P
29		GND	30		GND
31	J31: D6-	D6N	32	J31: D6+	D6P
33		GND	34		GND
35	J31: D7-	D7N	36	J31: D7+	D7P
37		GND	38		GND
39	J30: D0-	D8N	40	J30: D0+	D8P
41		GND	42		GND
43	J30: D1-	D9N	44	J30: D1+	D9P
45		GND	46		GND
47	J30: D2-	D10N	48	J30: D2+	D10P
49		GND	50		GND
51	J30: D3-	D11N	52	J30: D3+	D11P
53		GND	54		GND
55	J30: D4-	D12N	56	J30: D4+	D12P
57		GND	58		GND
59	J30: D5-	D13N	60	J30: D5+	D13P
61		GND	62		GND
63	J30: D6-	D14N	64	J30: D6+	D14P
65		GND	66		GND
67	J30: D7-	D15N	68	J30: D7+	D15P
69		GND	70		GND
71		NC	72		NC
73		GND	74		GND
75		NC	76		NC
77		GND	78		GND
79	J30:CLK-	CKN	80	J30: CLK+	CKP
81		GND	82		GND
83		NC	84		NC
85		GND	86		GND
87		NC	88		NC
89		GND	90		GND
91		NC	92		NC
93		GND	94		GND
95		GND	96		GND
97		NC	98		NC
99		NC	100		NC

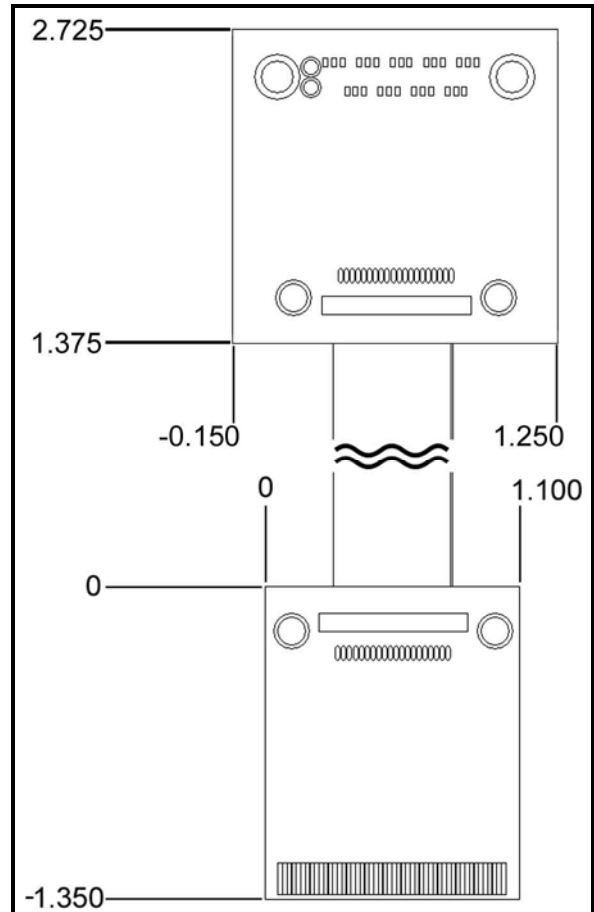
NEX-SAMDFMC

Differential, flexible adapter for connecting two Tektronix P6860 probes to a single E5378A footprint.



NEX-SAMDFMC - Image

Samtec P/N ASP-65267-02



NEX-SAMDFMC - Mechanical

NEX-SAMDFMC – Pinout

Samtec Pin	P6860	E5378A	Samtec Pin	P6860	E5378A
1		GND	2		GND
3		NC3	4		NC
5		GND	6		GND
7	J28: DO-	D0N	8	J28: D0+	D0P
9		GND	10		GND
11	J28: D1-	D1N	12	J28: D1+	D1P
13		GND	14		GND
15	J28: D2-	D2N	16	J28: D2+	D2P
17		GND	18		GND
19	J28: D3-	D3N	20	J28: D3+	D3P
21		GND	22		GND
23	J28: D4-	D4N	24	J28: D4+	D4P
25		GND	26		GND
27	J28: D5-	D5N	28	J28: D5+	D5P
29		GND	30		GND
31	J28: D6-	D6N	32	J28: D6+	D6P
33		GND	34		GND
35	J28: D7-	D7N	36	J28: D7+	D7P
37		GND	38		GND
39	J29: D0-	D8N	40	J29: D0+	D8P
41		GND	42		GND
43	J29: D1-	D9N	44	J29: D1+	D9P
45		GND	46		GND
47	J29: D2-	D10N	48	J29: D2+	D10P
49		GND	50		GND
51	J29: D3-	D11N	52	J29: D3+	D11P
53		GND	54		GND
55	J29: D4-	D12N	56	J29: D4+	D12P
57		GND	58		GND
59	J29: D5-	D13N	60	J29: D5+	D13P
61		GND	62		GND
63	J29: D6-	D14N	64	J29: D6+	D14P
65		GND	66		GND
67	J29: D7-	D15N	68	J29: D7+	D15P
69		GND	70		GND
71		NC	72		NC
73		GND	74		GND
75		NC	76		NC
77		GND	78		GND
79	J28:CLK-	CKN	80	J28: CLK+	CKP
81		GND	82		GND
83		NC	84		NC
85		GND	86		GND
87		NC	88		NC
89		GND	90		GND
91		NC	92		NC
93		GND	94		GND
95		GND	96		GND
97		NC	98		NC
99		NC	100		NC

Ordering / Contact Information

Part Number NEX-SAMSE

NEX-SAMSEMC

NEX-SAMDF

NEX-SAMDFMC

Includes: NEX-SAMXXXX adapter

Manual

Back-to-Back Probing Hardware

Contains all hardware necessary to easily convert Tektronix Compression Adapters

Postal: Nexus Technology, Inc.
78 Northeastern Blvd. #2
Nashua, NH 03062

Telephone: 877-595-8116

Fax: 877-595-8118

Email: support@nexustechnology.com
quotes@nexustechnology.com
techsupport@nexustechnology.com

Website: www.nexustechnology.com

Placing an Order

Credit Card orders can be placed directly at 877-595-8116.

Purchase orders can be faxed to 877-595-8118.

Nexus Technology, Inc. reserves the right to make changes in design or specification at any time without notice. Nexus Technology, Inc. does not assume responsibility for use of any circuitry described. All trademarks are the property of their respective owners.