
NEX-P6960COMP



- Designed for the customer that needs to convert from a P6960 foot print connection on their System Under Test to a P6860 Compression-type Logic Analyzer connection

General Description

The NEX-P6960COMP is an interface adapter used when the System Under Test contains the P6960 style D-Max Logic Analyzer Probe connections and the customer needs to use Tektronix P6860 probes. This adapter interfaces the two probe types.

The NEX-P6960COMP adapters are not static sensitive

Adapter signal lengths are matched to 0.25"

Cautions

- To ensure acceptable performance the customer must take into consideration the extra stub length added by this adapter in their simulations

Connection to the System Under Test

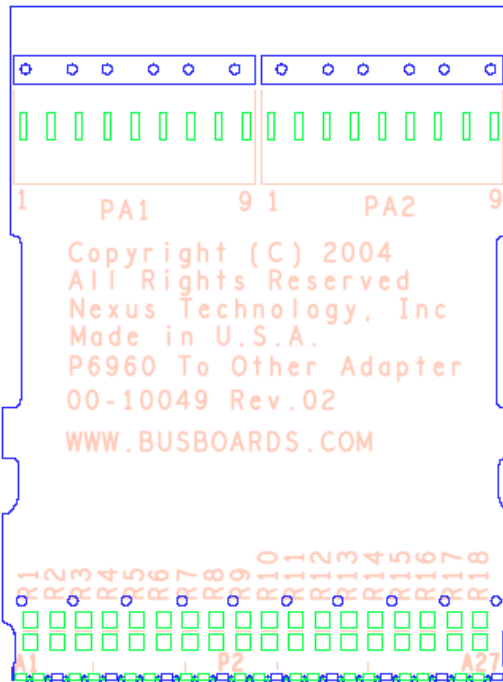
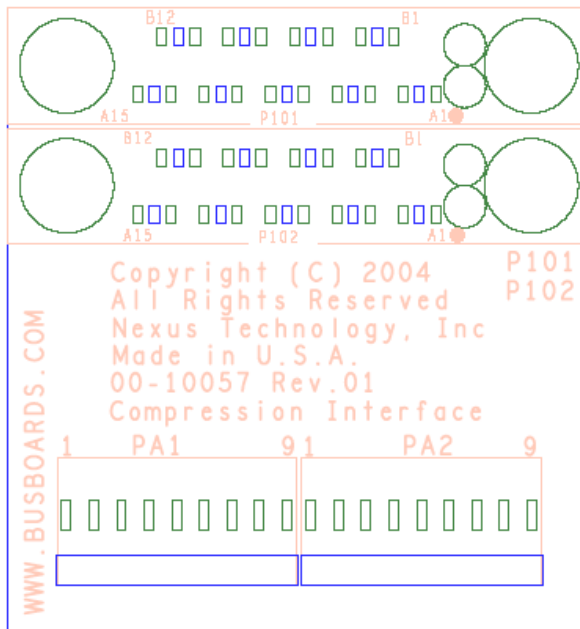
The P6960 end of the adapter (the end that connects to the system under test) is not keyed for correct alignment. For correct connection to the system under test the P6960 end of the NEXUS adapter must be connected to the system under test by matching the black screw to the black tie down, and the silver screw to the silver tie down. Channel mapping on the NEXUS adapter between the P6960 and P6860 connectors are contained in Table 1.

P6860 footprints can be found to either side of the of the interface board. The ability to probe on either side helps in avoiding possible mechanical interference problems.

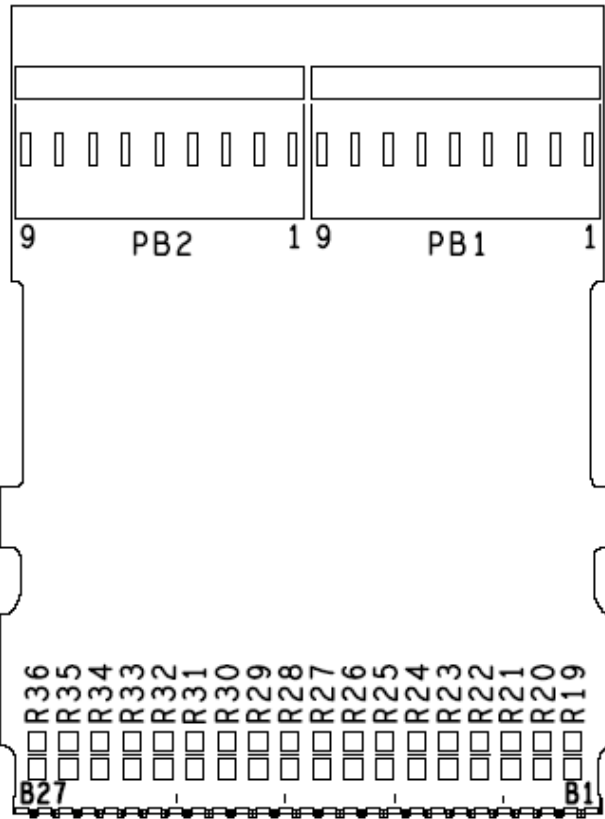
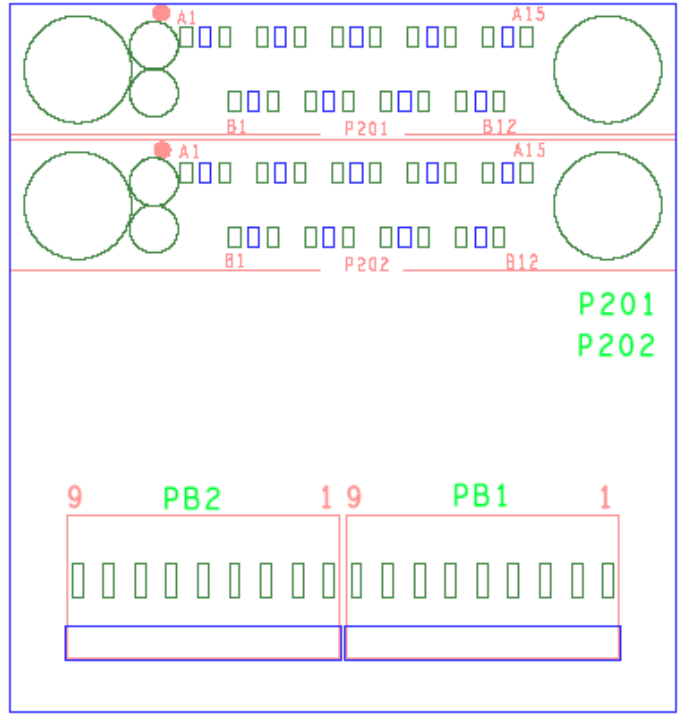
| P6960 Pin/Signal | A/D High Probe Chan. | A/D Low Probe Chan. | C Probe Chan. | E Probe Chan. | P6860 P101/P201 Pin | P6860 P102/P202 Pin |
|---------------------|----------------------------|---------------------------|---------------------|---------------------|---------------------------|---------------------------|
| A7/A8 | CLK:0 | CLK:1 | CLK:3 | Q3 | | A15/A13 |
| A14 | A3:7 | A1:7 | C3:7 | E3:7 | | B12 |
| A13 | A3:6 | A1:6 | C3:6 | E3:6 | | B10 |
| B12 | A3:5 | A1:5 | C3:5 | E3:5 | | A12 |
| B11 | A3:4 | A1:4 | C3:4 | E3:4 | | A10 |
| A11 | A3:3 | A1:3 | C3:3 | E3:3 | | B9 |
| A10 | A3:2 | A1:2 | C3:2 | E3:2 | | B7 |
| B9 | A3:1 | A1:1 | C3:1 | E3:1 | | A9 |
| B8 | A3:0 | A1:0 | C3:0 | E3:0 | | A7 |
| B6 | A2:7 | A0:7 | C2:7 | E2:7 | | B6 |
| B5 | A2:6 | A0:6 | C2:6 | E2:6 | | B4 |
| A5 | A2:5 | A0:5 | C2:5 | E2:5 | | A6 |
| A4 | A2:4 | A0:4 | C2:4 | E2:4 | | A4 |
| B3 | A2:3 | A0:3 | C2:3 | E2:3 | | B3 |
| B2 | A2:2 | A0:2 | C2:2 | E2:2 | | B1 |
| A2 | A2:1 | A0:1 | C2:1 | E2:1 | | A3 |
| A1 | A2:0 | A0:0 | C2:0 | E2:0 | | A1 |
| B21/B20 | Q0 | CLK:2 | Q1 | Q2 | A15/A13 | |
| B14 | D3:7 | D1:7 | C1:7 | E1:7 | B12 | |
| B15 | D3:6 | D1:6 | C1:6 | E1:6 | B10 | |
| A16 | D3:5 | D1:5 | C1:5 | E1:5 | A12 | |
| A17 | D3:4 | D1:4 | C1:4 | E1:4 | A10 | |
| B17 | D3:3 | D1:3 | C1:3 | E1:3 | B9 | |
| B18 | D3:2 | D1:2 | C1:2 | E1:2 | B7 | |
| A19 | D3:1 | D1:1 | C1:1 | E1:1 | A9 | |
| A20 | D3:0 | D1:0 | C1:0 | E1:0 | A7 | |
| A22 | D2:7 | D0:7 | C0:7 | E0:7 | B6 | |
| A23 | D2:6 | D0:6 | C0:6 | E0:6 | B4 | |
| B23 | D2:5 | D0:5 | C0:5 | E0:5 | A6 | |
| B24 | D2:4 | D0:4 | C0:4 | E0:4 | A4 | |
| A25 | D2:3 | D0:3 | C0:3 | E0:3 | B3 | |
| A26 | D2:2 | D0:2 | C0:2 | E0:2 | B1 | |
| B26 | D2:1 | D0:1 | C0:1 | E0:1 | A3 | |
| B27 | D2:0 | D0:0 | C0:0 | E0:0 | A1 | |

Table 1: TLA Input Cross-Reference List

Silkscreen Front for NEX-P6960COMP



Silkscreen Back for NEX-P6960COMP

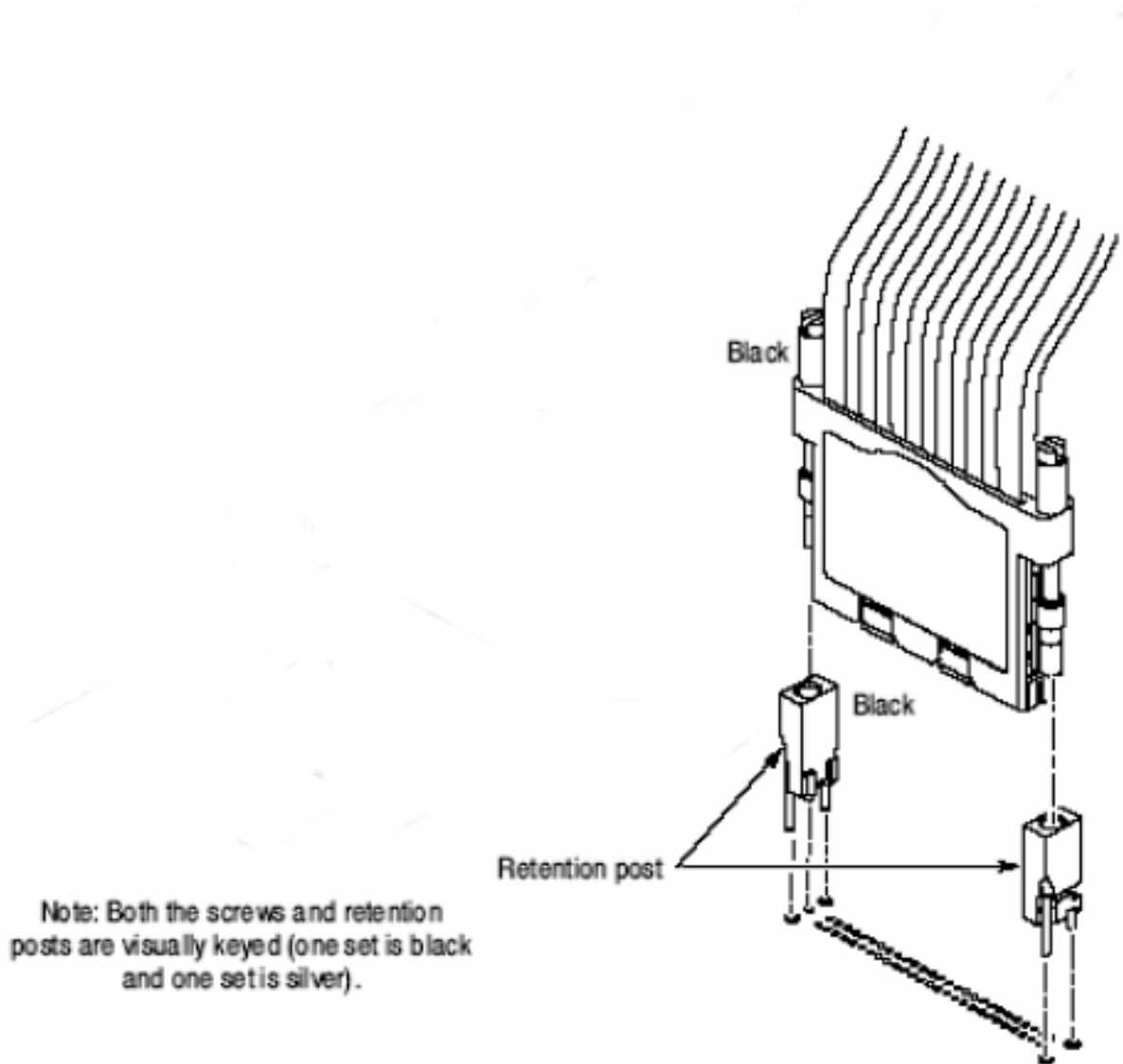


Mechanical Specification for NEX-P6960M

Keep Out Volume:

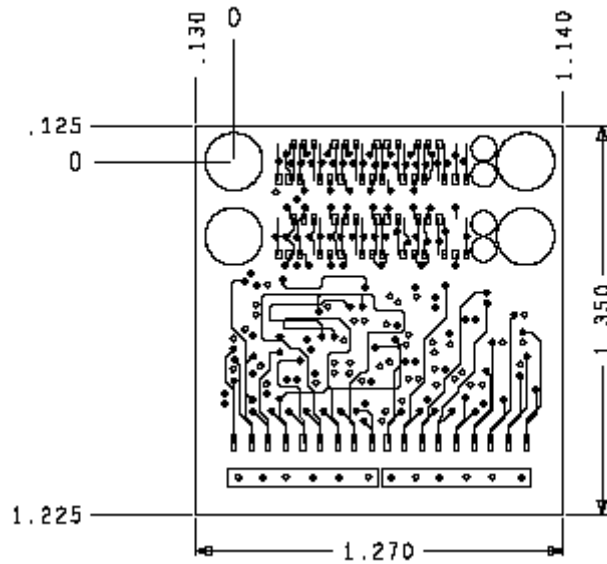
Bottom keep out is the same as the P6960 --- Height from the circuit board to the top of the retention screws is 1.512", width is 0.25".

There is approximately two inches of coax between the P6960 probe tip and the Compression connector board.

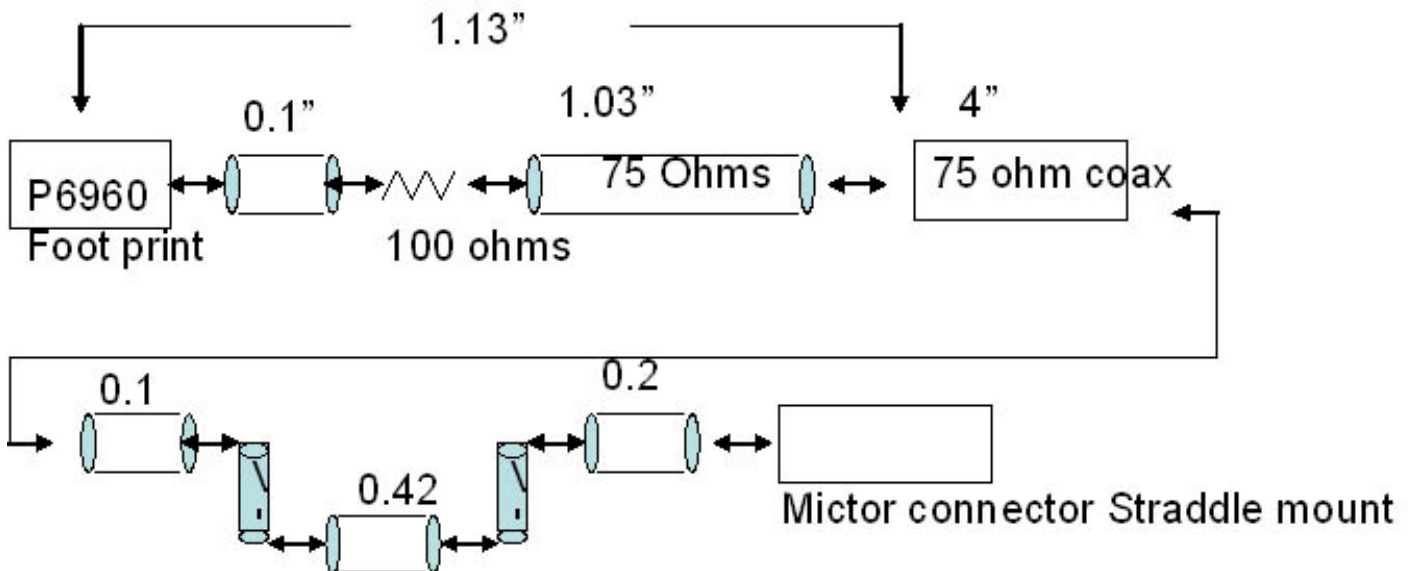


Product above is a Tektronix P6960. Drawing taken from Tektronix data sheet.

Mechanical of P6860/Compression interface board



Equivalent Circuit



All transmission lines are 75 ohms. Transmission lengths are averages.

Ordering / Contact Information

Please see the website or contact us for complete solutions.

Part Number NEX-P6960COMP

Interface between P6960 footprint on SUT and P6860/Compression probes to the Tektronix Logic Analyzer.

Postal: Nexus Technology, Inc.
78 Northeastern Blvd. #2
Nashua, NH 03062

Telephone: 877-595-8116

Fax: 877-595-8118

Email: support@nexustechnology.com
quotes@nexustechnology.com
techsupport@nexustechnology.com

Website: www.nexustechnology.com

Placing an Order

Credit Card orders can be placed directly at 877-595-8116.

Purchase orders can be faxed to 877-595-8118.

Nexus Technology, Inc. reserves the right to make changes in design or specification at any time without notice. Nexus Technology, Inc. does not assume responsibility for use of any circuitry described. All trademarks are the property of their respective owners.