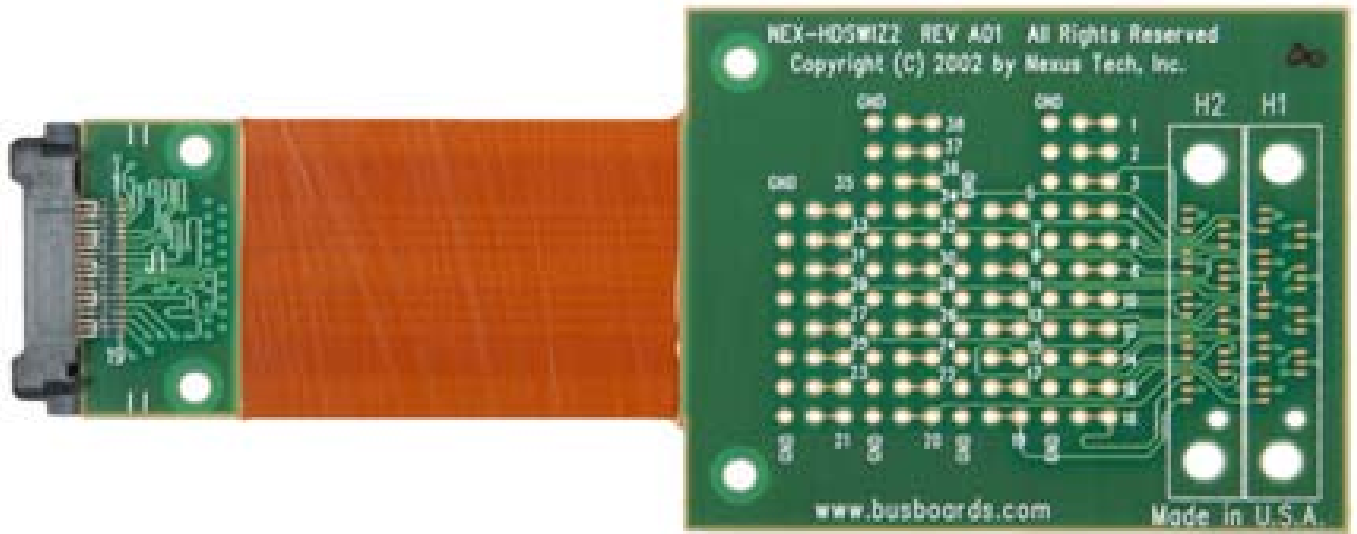

NEX-HDSWIZ2



Pad area provided so traces can be easily re-wired

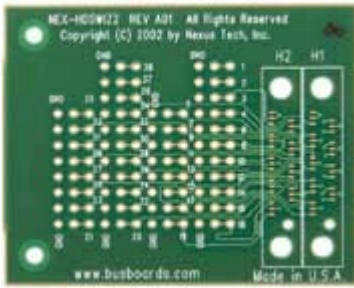
Impedance matched flex circuit for maximum mechanical flexibility

All 38 pins accessible for re-wiring

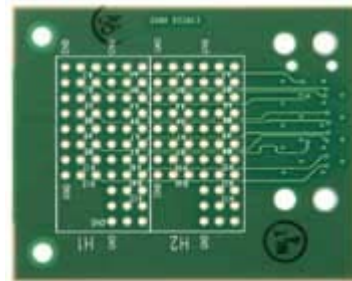
Ground rows provided so that 0.1" headers (2x8 or 2x11) can be used for easy probing of all signals

Pads are labeled for both the compression probes and the mictor probe. The compression probe mapping can be found on the underside of the board and is shown on the next page.

General Information



Compression Pad Breakout (Top)



P6434 (Mictor) Pad Breakout (Bottom)

Important: Refer to the Tektronix P6434 Mass Termination Probe Manual for complete information on properly adding mictor connectors to a target design.

Amp Mictor Pin #	Tek Mictor Pin #	TLA700 Channel	H2 Compression Pad #	Amp Mictor Pin #	Tek Mictor Pin #	TLA700 Channel	H1 Compression Pad #
5	3	Q3/CK0/Q0/CK3	A13	6	36	Q2/CK1/CK2/Q1	A13
7	4	E/A/D/C3:7	B12	8	35	E/AD/C1:7	B12
9	5	E/A/D/C3:6	B10	10	34	E/AD/C1:6	B10
11	6	E/A/D/C3:5	A12	12	33	E/AD/C1:5	A12
13	7	E/A/D/C3:4	A10	14	32	E/AD/C1:4	A10
15	8	E/A/D/C3:3	B9	16	31	E/AD/C1:3	B9
17	9	E/A/D/C3:2	B7	18	30	E/AD/C1:2	B7
19	10	E/A/D/C3:1	A9	20	29	E/AD/C1:1	A9
21	11	E/A/D/C3:0	A7	22	28	E/AD/C1:0	A7
23	12	E/A/D/C2:7	B6	24	27	E/AD/C0:7	B6
25	13	E/A/D/C2:6	B4	26	26	E/AD/C0:6	B4
27	14	E/A/D/C2:5	A6	28	25	E/AD/C0:5	A6
29	15	E/A/D/C2:4	A4	30	24	E/AD/C0:4	A4
31	16	E/A/D/C2:3	B3	32	23	E/AD/C0:3	B3
33	17	E/A/D/C2:2	B1	34	22	E/AD/C0:2	B1
35	18	E/A/D/C2:1	A3	36	21	E/AD/C0:1	A3
37	19	E/A/D/C2:0	A1	38	20	E/AD/C0:0	A1

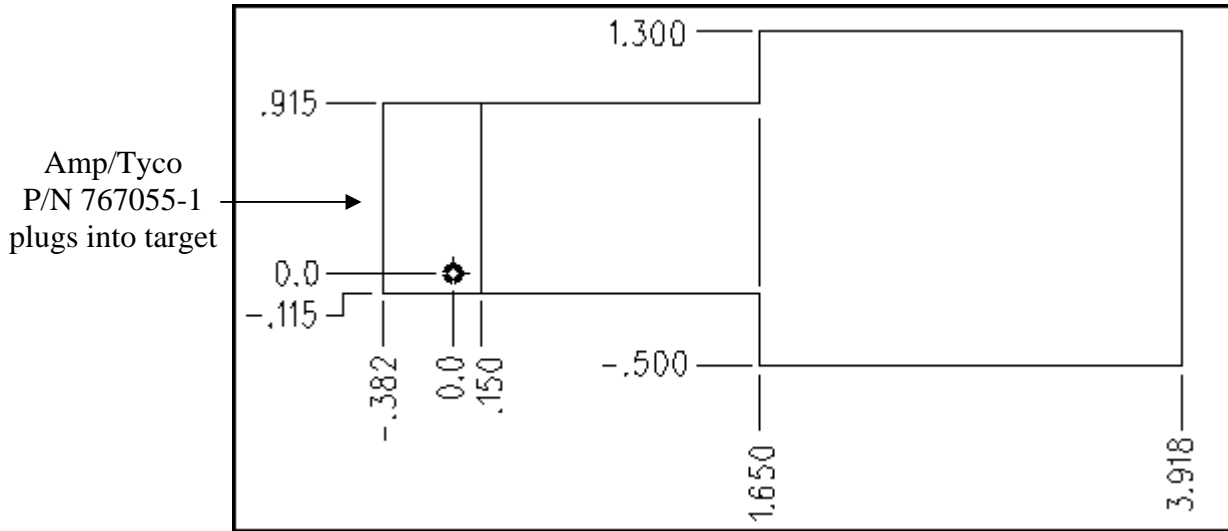
Inverting Clock/Qualifier P6860/P6880 inputs on compression pad A15 are tied to ground.

Compression pads B11, A11, B8, A8, B5, A5, B2 and A2 are tied to ground.

For more information on the P6860 / P6880 compression pad interface, please refer to the *P6810, P6860 and P6880 Logic Analyzer Probes* instruction manual available from Tektronix (Tek. P/N 071-1059-0x).

For more information on the P6434 mictor probe interface, please refer to the *P6434 Mass Termination Probe* instruction manual available from Tektronix (Tek. P/N 070-9793-0x).

Mechanical Outline



Ordering / Contact Information

Part Number NEX-HDSWIZ2

Includes: One NEX-HDSWIZ2 adapter

Postal: Nexus Technology, Inc.
78 Northeastern Blvd. #2
Nashua, NH 03062

Telephone: 877-595-8116

Fax: 877-595-8118

Email: support@nexustechnology.com
quotes@nexustechnology.com
techsupport@nexustechnology.com

Website: www.nexustechnology.com

Placing an Order

Credit Card orders can be placed directly at 877-595-8116.

Purchase orders can be faxed to 877-595-8118.

Nexus Technology, Inc. reserves the right to make changes in design or specification at any time without notice. Nexus Technology, Inc. does not assume responsibility for use of any circuitry described. All trademarks are the property of their respective owners.